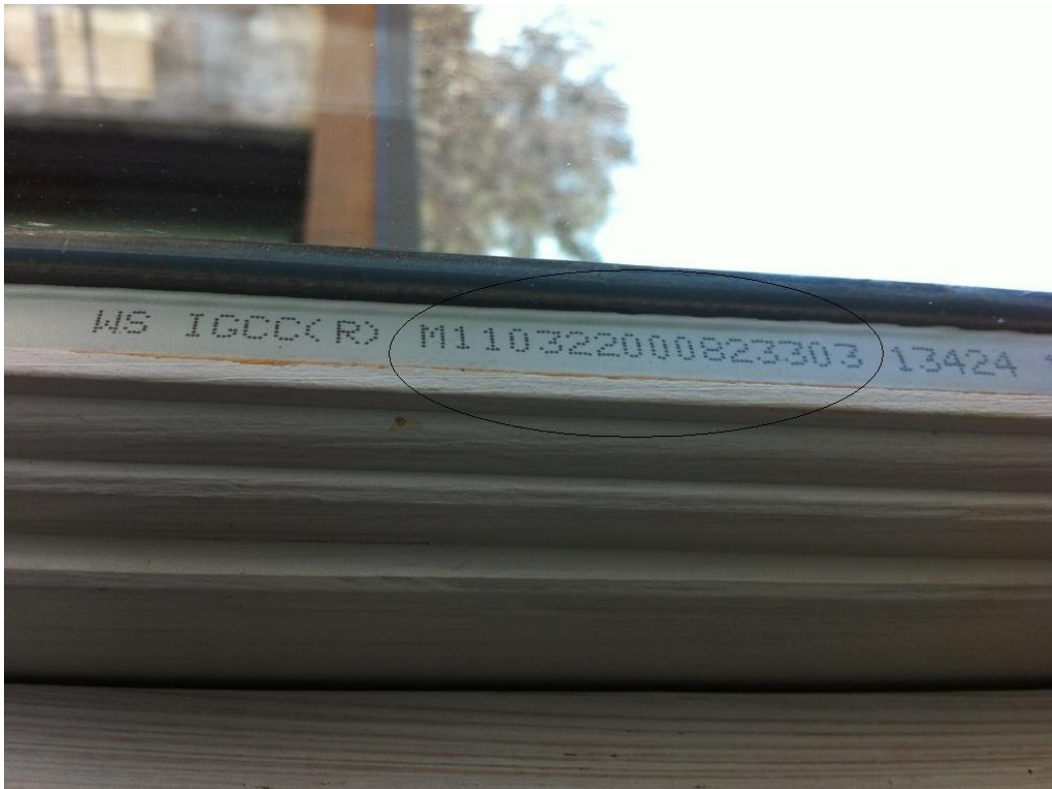


## Glass ID Code Identification Steps



*The letter will be for the plant that produced the unit.*

- *M= Millwork P= Park Falls L= Ladysmith*

*The 00 behind the M is the year of manufacture. (2000)*

- *Occasionally the zero's at the front of the number may be omitted*

*The next two numbers will be the month of manufacture. (12)*

- *If the year is 2000, occasionally an additional zero at the front of the number may be omitted*

*The next two numbers are the day of manufacture. (21)*

*Then there will be a series of zeroes – the entire ID will be 12-15 numbers, not including the letter. (M, P, L)*

*If there is a question on a number, you can't tell if it is an 8 or a 0, please note this when submitting the order and we will try different numbers when we are checking it to try to make it work.*

Please also provide the overall visible glass size (only the glass that you can see WIDTH X HEIGHT and ignore the divided light bars) as a double-check to make sure we have the right code number(s) and also indicate whether it is the bottom sash or top sash of a double-hung or if it is a casement hinged right or left (as viewed from the outside) or stationary.

If you can't find or read the code... we can still move forward with the service request, but we will need to send a field tech out to determine all of the sizing and other specifications for glass and/or other parts that are needed. There may be a fee charged for the visit.